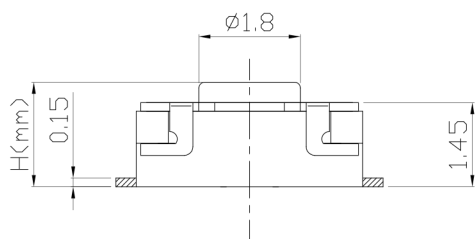
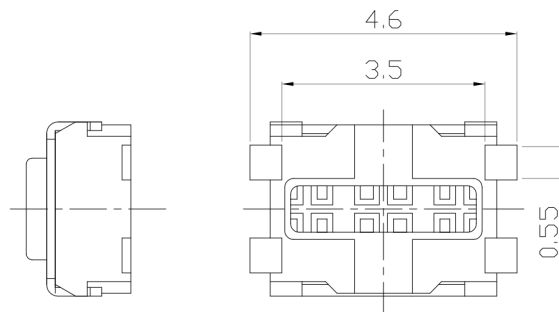
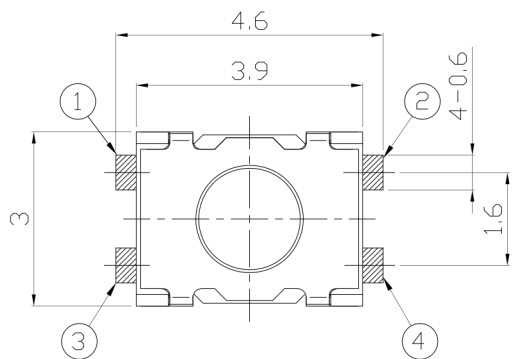




RoHS Compliant
2002/95/EC

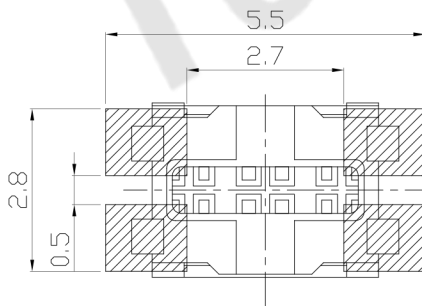
| REV. | ECN. | NO. | APPD. |
|------|------|-----|-------|
| | | | |
| | | | |

DIMENSIONS

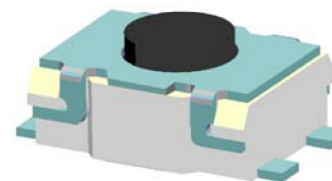


P.C.B MOUNTING PATTERN DIMENSION

The following soldering patterns are recommended for reflow soldering



PRODUCT IMAGE

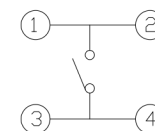


MODEL CODE

AT-1185BP1-

| | |
|---|-----|
| | H |
| A | 1.8 |
| B | 2.0 |

CIRCUIT DIAGRAM



ELECTRO-MECHANICAL CHARACTERISTICS

Refer to additional specifications

| | | |
|------------------------|-------------|----------|
| Rating | DC 12V 50mA | |
| Contact Resistance | 100mΩ Max. | |
| Travel | 0.2 ± 0.1mm | |
| Operating Force | 160±30gf | 250±50gf |
| Operating Life(cycles) | 100,000 | |

| | | |
|--|--------|-----------------|
| .X ±0.3 | X. ±2' | UNITS mm |
| | | MAT'L SEE NOTE |
| | | FINISH SEE NOTE |
| | | Q'TY |
| <small>THESE DRAWINGS AND SPECIFICATIONS ARE THE PROPERTY OF ACCURATE INNOVATECH INC AND SHALL NOT BE REPRODUCED, COPIED OR USED IN ANY MANNER WITHOUT THE PRIOR WRITTEN CONSENT OF ACCURATE INNOVATECH INC.</small> | | |

东莞市腾兴电子有限公司

| | | | |
|------------------------|--|-----------------------------|------------------|
| TITLE: TACT SWITCH | | PART NO.: AT-1185BP1 SERIES | |
| DR: Ricky 2014/03/31 | | DWG NO.: ASI-1185BP1 | |
| CHKD: Ricky 2014/03/31 | | SCALE 1:1 | SHEET 1/1 |
| APPD: | | REV. A | CUSTOMER DRAWING |