

RoHS  
COMPLIANT

SPECIFICATIONS

1. Current rating: 3A AC, DC
2. Voltage rating: 250V AC,DC
3. Temperature range: -40°C ~ +105°C
4. Insulation resistance: 1000MΩ Min.
5. Withstanding voltage: 1000V AC/ minute.
6. Contact resistance: 30mΩ Max.

Material:

Insulator: Nylon 66 UL 94V-0

Contact: Brass

Plating: Tin plated over Nickel

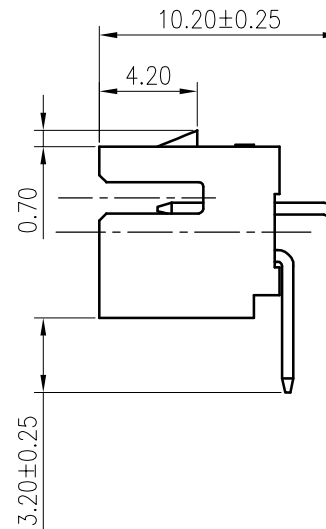
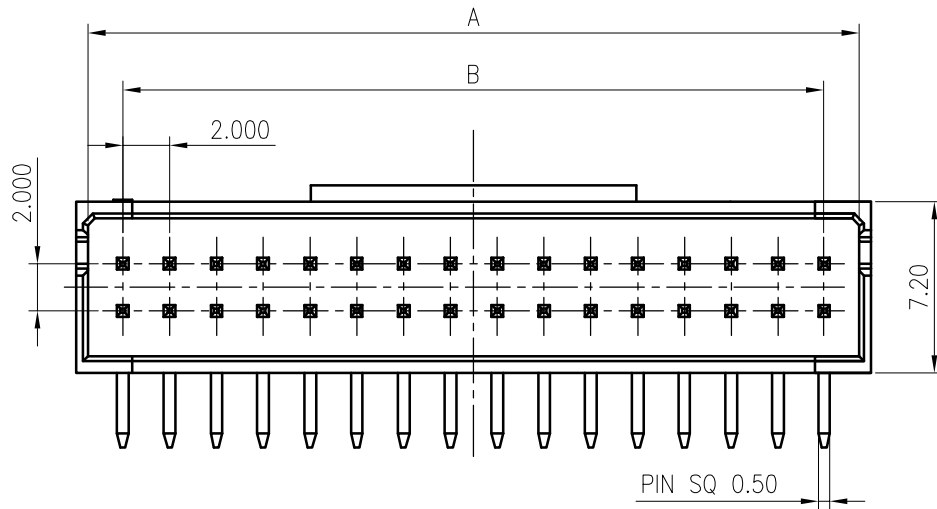
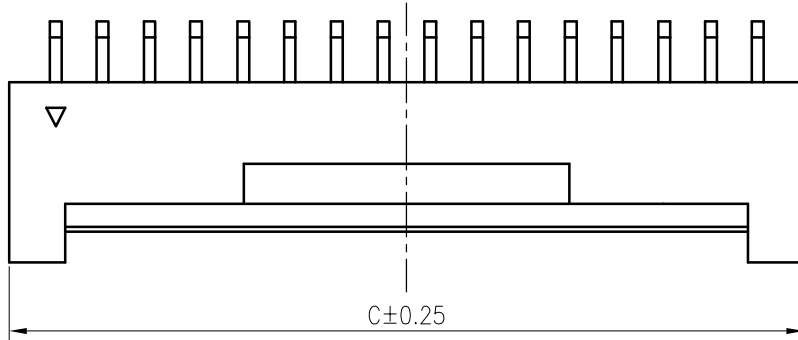
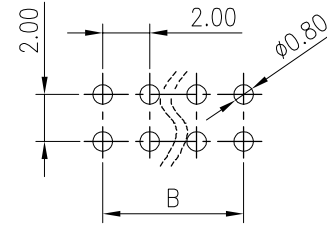
Mate with KR2012 series Housing

Ordering Code:

**A2** C2012RD \*\*\* 22 T01 01 PB

No. of Circuits   
204:2\*4,220:2\*20

Recommended P.C.B Layout(top side)  
Tolerance=±0.05



Circuits	Dimensions			Circuits	Dimensions		
	A	B	C		A	B	C
2x4	8.90	6.00	10.00	2x13	26.90	24.00	28.00
2x5	10.90	8.00	12.00	2x14	28.90	26.00	30.00
2x6	12.90	10.00	14.00	2x15	30.90	28.00	32.00
2x7	14.90	12.00	16.00	2x16	32.90	30.00	34.00
2x8	16.90	14.00	18.00	2x17	34.90	32.00	36.00
2x9	18.90	16.00	20.00	2x18	36.90	34.00	38.00
2x10	20.90	18.00	22.00	2x19	38.90	36.00	40.00
2x11	22.90	20.00	24.00	2x20	40.90	38.00	42.00
2x12	24.90	22.00	26.00				

F	<b>A3</b>				TOLERANCE	TITLE: PHB2.0 DIP 90° Wafer	DRAWN: Liujiangtian 2020.05.04	东莞市腾兴电子有限公司		
	<b>A2</b>	更改料号及图框格式	LJT	2020.05.04	X. X ±0.30 X. XX ±0.20 X. XXX ±0.10 Angle ±2°		CHECKED:			
MARK	REVISION DESCRIPTION	SIGNATURE	DATE		UNIT: mm	SCALE: N/A	SHEET: 1/1	PROJECTION	REV.: A2	DRAWING NO.: 2012WRD201-B-S
1	2	3	4	5	6	7	8	9		