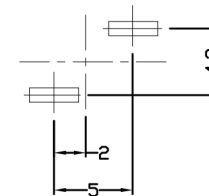
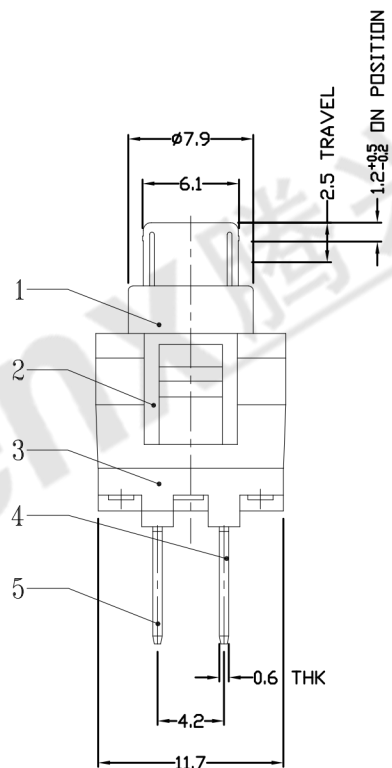
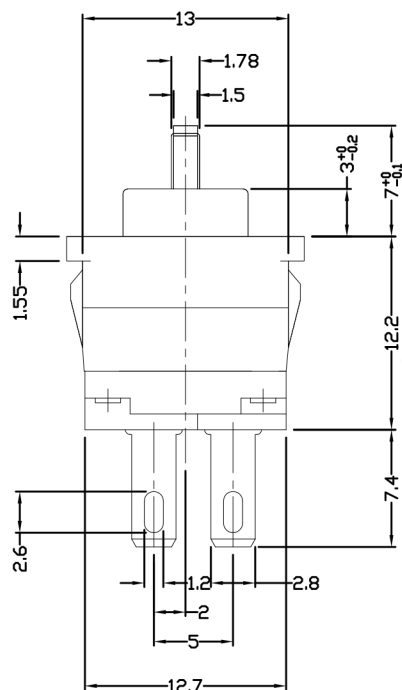
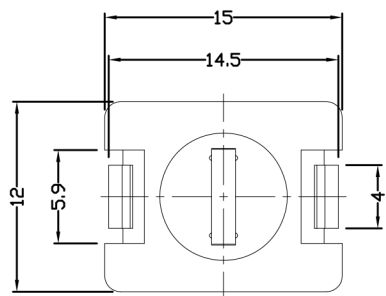




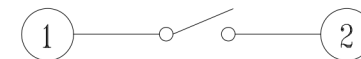
RoHS
Compliant
2002/95/EC

REV.	ECN. NO.	APPD.

DIMENSIONS



P.C.B LAYOUT
TOP VIEW



CIRCUIT DIAGRAM

ELECTRO-MECHANICAL CHARACTERISTICS

Refer to additional specifications

RATING	DC30V 0.1A
CIRCUIT	1P1T
CONTACT RESISTANCE	30mΩ MAX.
TIMING	
OPERATING MODE	NON-LOCK
STROKE	FULL 2.5mm ON 1.2±0.2mm
OPERATING FORCE	100±30gf
OPERATING LIFE(cycles)	10,000

8					
7	SPRING	STAINLESS STEEL WIRE	1	NATURAL	WITHIN 1.5mm: ±0.1mm
6	CONTACT	SUS	1	Ag<0.5μm>PLATED	OVER 1.5mm: ±0.2mm
5	U-TERMINAL	BRASS STRIP	1	Ag<0.5μm> PLATED OVER Ni PLATED	
4	V-TERMINAL	BRASS STRIP	1	Ag<0.5μm> PLATED OVER Ni PLATED	
3	CASE	NYLON+F.G	1	BLACK	
2	COVER	PC	1	BLACK	
1	KNOB	PDM	1	WHITE	
NO.	PARTS	MATERIAL	Q'TY	FINISHING	

THESE DRAWINGS AND SPECIFICATIONS ARE THE PROPERTY OF ACCURATE INNO TECH INC AND SHALL NOT BE REPRODUCED, COPIED OR USED IN ANY MANNER WITHOUT THE PRIOR WRITTEN CONSENT OF ACCURATE INNO TECH INC.

UNITS	mm
MAT'L	SEE NOTE
FINISH	SEE NOTE
Q'TY	

东莞市腾兴电子有限公司

TITLE: PUSH SWITCH / VERTICAL	PART NO.: AP-11E04N
DR: Ricky 2015/03/19	DWG NO.: ADJ-11E04
CHKD: Ricky 2015/03/19	SCALE SHEET REV. CUSTOMER 2:1 1/1 A DRAWING
APPD:	