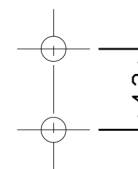
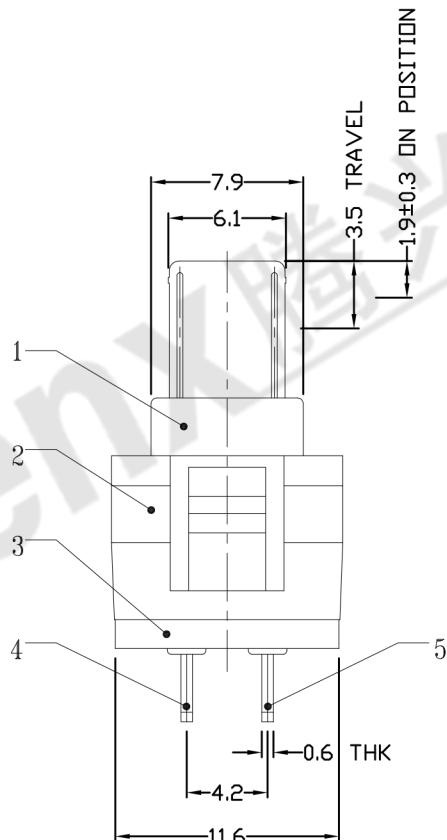
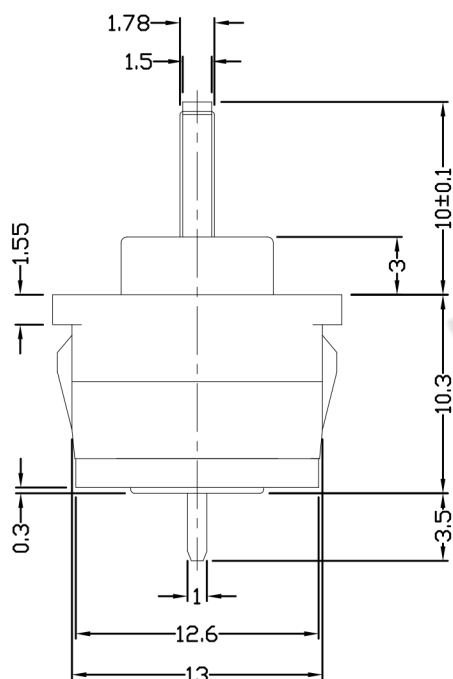
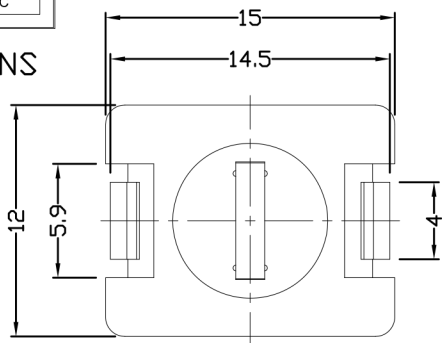




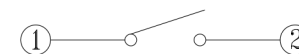
RoHS
Compliant
2002/95/EC

REV.	ECN.	NO.	APPD.

DIMENSIONS



P.C.B LAYOUT
BOTTOM VIEW



CIRCUIT DIAGRAM

ELECTRO-MECHANICAL CHARACTERISTICS

Refer to additional specifications

RATING	DC30V 0.1A
CIRCUIT	1P1T
CONTACT RESISTANCE	30mΩ MAX.
TIMING	
OPERATING MODE	NON-LOCK
STROKE	FULL 3.5mm ON 1.9±0.3
OPERATING FORCE	100±30gf
OPERATING LIFE(cycles)	10,000

NO.	PARTS	MATERIAL	Q'TY	FINISHING
8				
7	SPRING	SUS	1	NATURAL
6	CONTACT	SUS	1	Ag<0.5μm>PLATED
5	U-TERMINAL	BRASS STRIP	1	Ag<0.5μm> PLATED OVER Ni PLATED
4	V-TERMINAL	BRASS STRIP	1	Ag<0.5μm> PLATED OVER Ni PLATED
3	CASE	NYLON+F.G	1	BLACK
2	COVER	PC	1	BLACK
1	KNOB	PDM	1	WHITE

WITHIN 1.5mm: ±0.1mm	UNITS mm
OVER 1.5mm: ±0.2mm	MAT'L SEE NOTE
	FINISH SEE NOTE
	Q'TY

THESE DRAWINGS AND SPECIFICATIONS ARE THE PROPERTY OF ACCURATE INNOVATECH INC AND SHALL NOT BE REPRODUCED, COPIED OR USED IN ANY MANNER WITHOUT THE PRIOR WRITTEN CONSENT OF ACCURATE INNOVATECH INC.

东莞市腾兴电子有限公司			
TITLE: PUSH SWITCH / VERTICAL		PART NO.: AP-11E02N	
DR: Ricky 2015/03/19		DWG NO.: ADJ-11E02	
CHKD: Ricky 2015/03/19		SCALE: 5:2	SHEET: 1/1
APPD:		REV.: A	CUSTOMER DRAWING