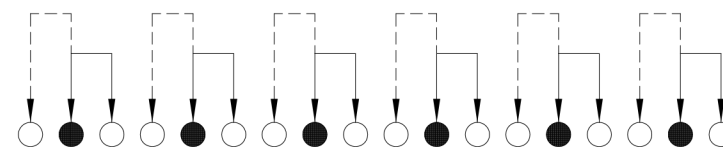
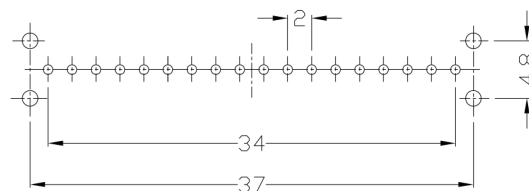




**RoHS Compliant**  
2002/95/EC

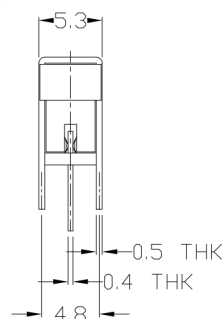
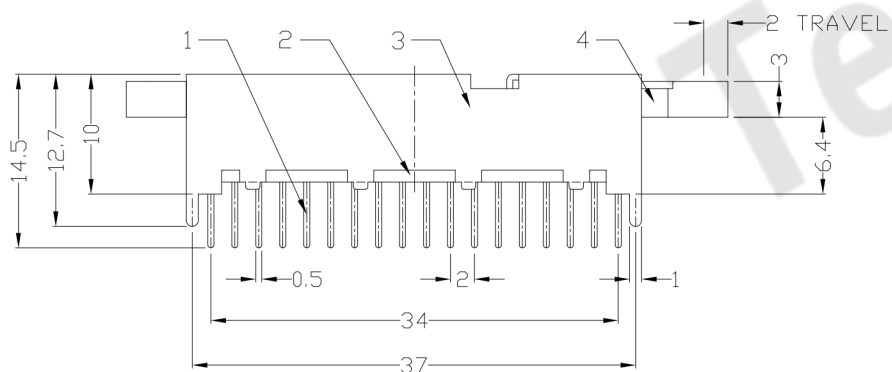
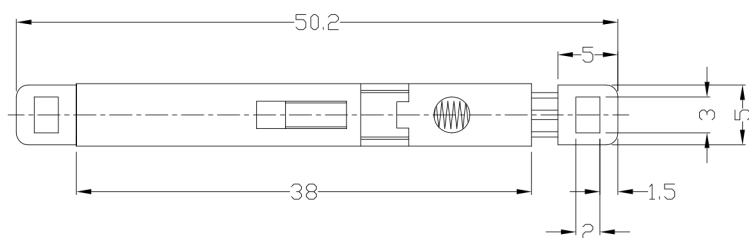
REV.	ECN.	NO.	APPD.

### DIMENSIONS



P.C.B LAYOUT  
BOTTOM VIEW

CIRCUIT DIAGRAM



### ELECTRO-MECHANICAL CHARACTERISTICS

Refer to additional specifications

RATING	DC50V 0.3A
CIRCUIT	6P2T
CONTACT RESISTANCE	100mΩ MAX.
TIMING	NON-SHORTING
OPERATING MODE	NON-LOCK
STROKE	FULL 2mm
OPERATING FORCE	300±100gf
OPERATING LIFE(cycles)	10,000

NO.	PARTS	MATERIAL	Q'TY	FINISHING
8				
7				
6	SPRING	STEEL WIRE	1	NATURAL
5	CONTACT CLIP	PBS STRIP	6	Ag PLATED
4	KNOB	ABS	1	BLACK
3	FRAME	STEEL STRIP	1	Ni PLATED
2	BASE	PHENOLIC RESIN	1	NATURAL
1	TERMINAL	BRASS STRIP	18	Ag PLATED

WITHIN 1.5mm:±0.1mm
OVER 1.5mm:±0.2mm
UNITS mm
MAT'L SEE NOTE
FINISH SEE NOTE
Q'TY
THESE DRAWINGS AND SPECIFICATIONS ARE THE PROPERTY OF ACCURATE INNO TECH INC AND SHALL NOT BE REPRODUCED, COPIED OR USED IN ANY MANNER WITHOUT THE PRIOR WRITTEN CONSENT OF ACCURATE INNO TECH INC.

UNITS mm
MAT'L SEE NOTE
FINISH SEE NOTE
Q'TY

<b>东莞市腾兴电子有限公司</b>			
TITLE: PUSH SWITCH / HORIZONTAL	PART NO.: AP-62D01N		
DR: <i>Ricky</i> 2015/04/08	DWG NO.: ADL-62D01		
CHKD: <i>Ricky</i> 2015/04/08	SCALE 3:2	SHEET 1/1	REV. A
APPD:	CUSTOMER DRAWING		