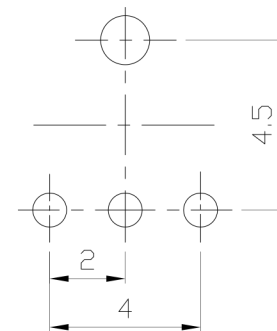
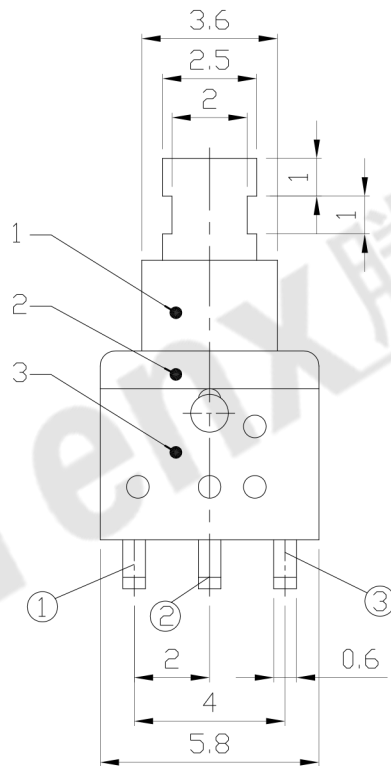
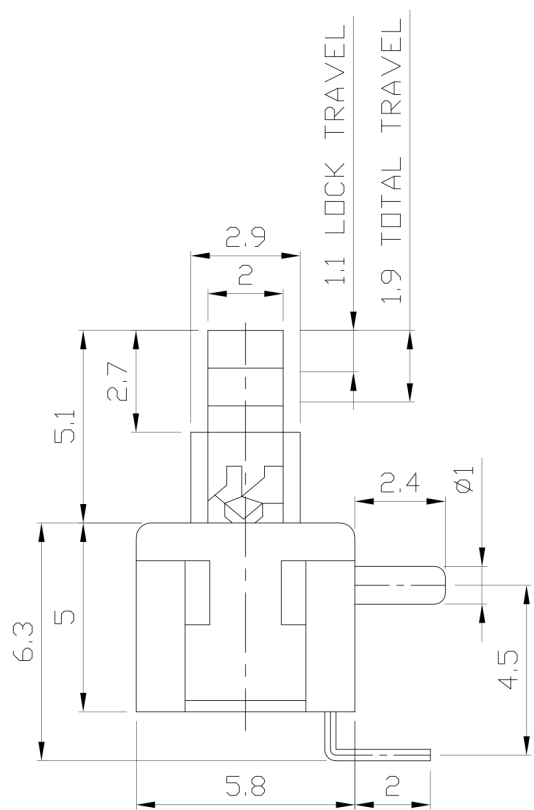




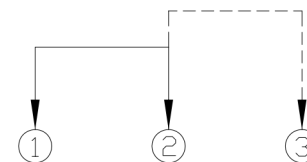
RoHS
Compliant
2002/95/EC

REV.	ECN. NO.	APPD.

DIMENSIONS



P.C.B LAYOUT
BOTTOM VIEW



CIRCUIT DIAGRAM

ELECTRO-MECHANICAL CHARACTERISTICS

Refer to additional specifications

RATING	0.2A 12V DC	
CIRCUIT	2P2T	
CONTACT RESISTANCE	100mΩ MAX.	
TIMING	SELF-LOCK	AP-2216HL
OPERATING MODE	NON-SHORTING	AP-2216HN
STROKE	FULL 1.9mm	LOCK 1.1mm
OPERATING FORCE	180±50gf	
OPERATING LIFE(cycles)	10,000	

9					
8					
7					
6					
5	SPRING	SUS	1	NATURAL	
4	CAM STICK	SUS	1	NATURAL	
3	CASE	PA66/BRASS STRIP	1	GREY/Aq PLATED	
2	COVER	PBT	1	BLACK	
1	KNOB	PBT	1	WHITE/Aq CLAD	
NO.	PARTS	MATERIAL	Q'TY	FINISHING	

WITHIN 1.5mm: ±0.1mm
OVER 1.5mm: ±0.2mm

THESE DRAWINGS AND SPECIFICATIONS ARE THE PROPERTY OF ACCURATE INNOVATECH INC AND SHALL NOT BE REPRODUCED, COPIED OR USED IN ANY MANNER WITHOUT THE PRIOR WRITTEN CONSENT OF ACCURATE INNOVATECH INC.

UNITS mm
MAT'L SEE NOTE
FINISH SEE NOTE
Q'TY

东莞市腾兴电子有限公司

TITLE: PUSH SWITCH / HORIZONTAL	PART NO.: AP-2216HL & AP-2216HN
DR: <i>Ricky</i> 2016/02/19	DWG NO.: ADL-2216H
CHKD: <i>Ricky</i> 2016/02/19	SCALE SHEET REV. CUSTOMER DRAWING
APPD:	5:1 1/1 A