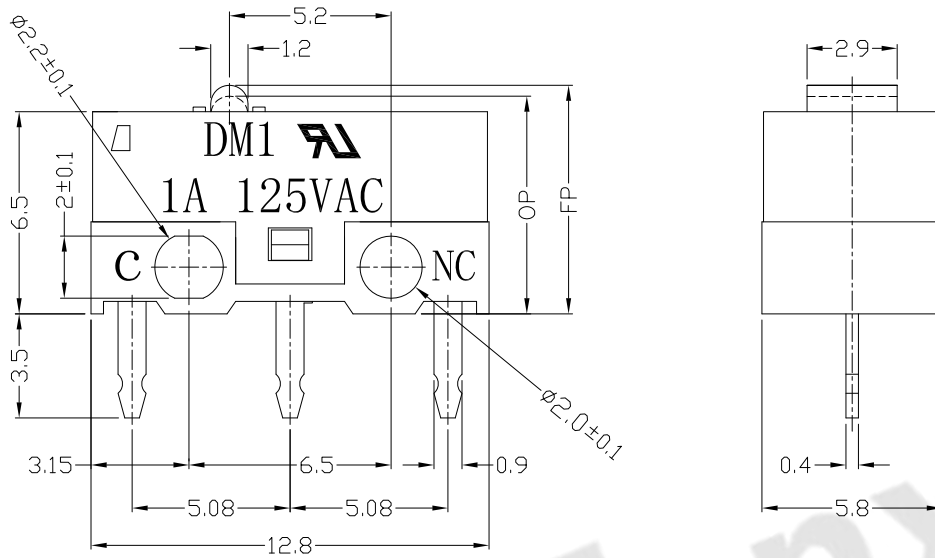




RoHS  
Compliant  
2002/95/EC

REV.	ECN.	NO.	APPD.

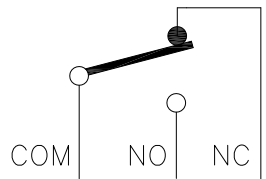
## DIMENSIONS



## MODEL CODE

DM 1 - 00 X - XX - 3  
1 2 3 4 5 6

- Series : DM
- Current Rating : 1=1A 125VAC ; 30mA DC5V
- Actuator : 00=non-lever 01-99=Lever
- Termination : see chart (P/C/D/T/N)
- Operating Force : see chart
- Button colour : 3=white
- Cover type : No-0=have two lines



CIRCUIT DIAGRAM

## 1.Functional spec

1.1 Rated Voltage	125VAC/DC5V
1.2 Rated Current	1A/30mA
1.3 Contact Resistance	≤100mΩ(Initial value)
1.4 Operating Force	60±20gf   130±30gf
1.5 Bounce Time	
1.6 Free Position	7.35±0.2mm
1.7 Operating Position	7.0±0.2mm
1.8 Position Travel	
1.9 Return Force	

## 2.Reliable Rating

2.1 Mechanical Life	1,000,000 CYCLES
2.2 Electrical Life	10,000 CYCLES
2.3 Insulation Resistance	≥100MΩ DC500V
2.4 Withstand Voltage	AC500V 1 minute
2.5 Soldering Technic	Hand Soldering
2.6 Operating Temper	-25°C ~ +65°C
2.7 Ambient Humidity Used	<85%RH

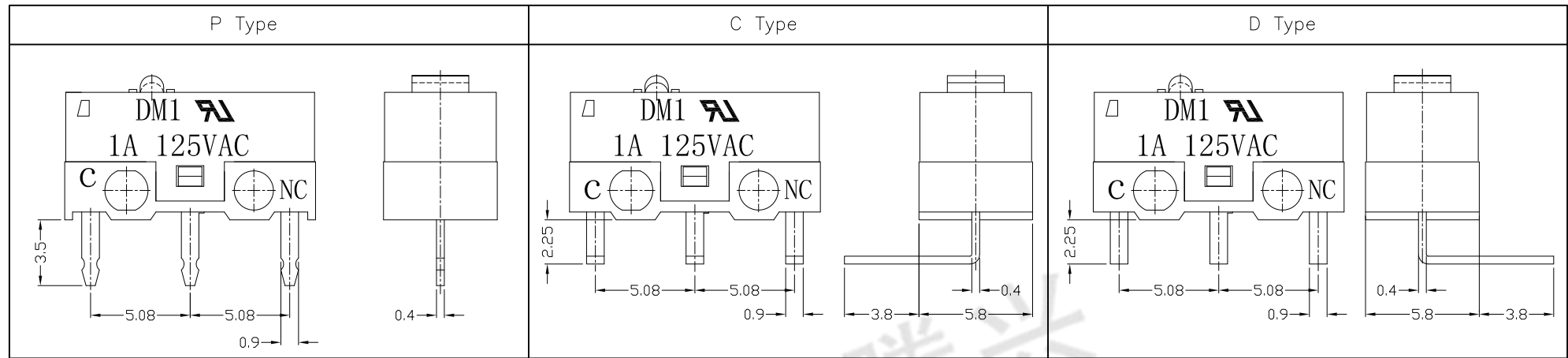
Tolerance:±0.2	UNITS mm	东莞市腾兴电子有限公司				
	MAT'L					
	SEE NOTE	TITLE:	PART NO:			
	FINISH	MICRO SWITCH DM SERIES	DM1-00P-XX-3			
	SEE NOTE	DR: Ricky 2017/2/15	DWG NO:			
	Q'TY	CHKD: Ricky 2017/2/15	ATD-00X-XX-3			
THESE DRAWINGS AND SPECIFICATIONS ARE THE PROPERTY OF ACCURATE INNOTECH INC AND SHALL NOT BE REPRODUCED, COPIED OR USED IN ANY MANNER WITHOUT THE PRIOR WRITTEN CONSENT OF ACCURATE INNOTECH INC.		APPD:	SCALE	SHEET	REV.	CUSTOMER DRAWING
			1:1	1/2	A	



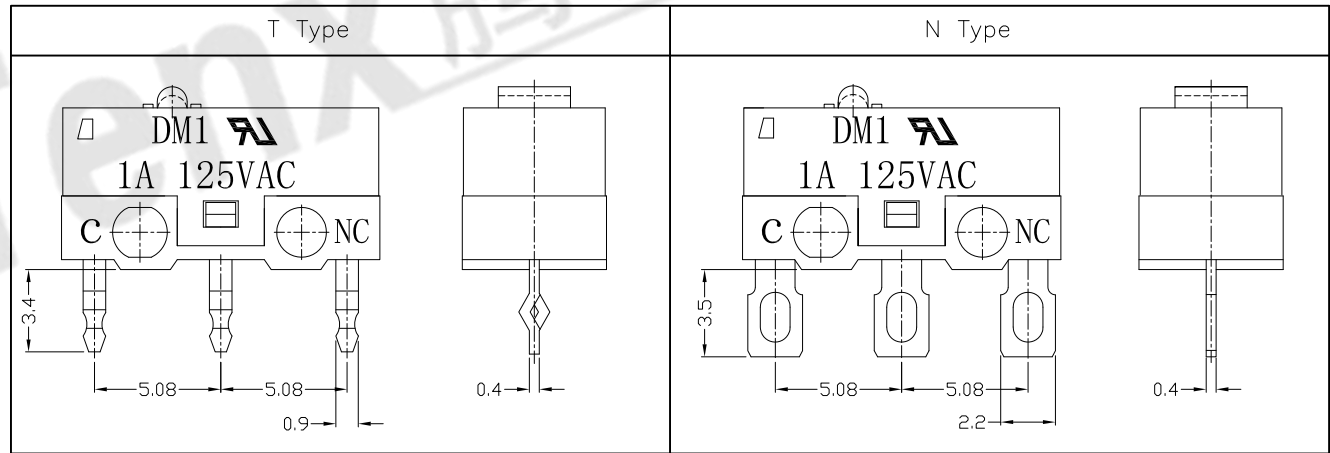
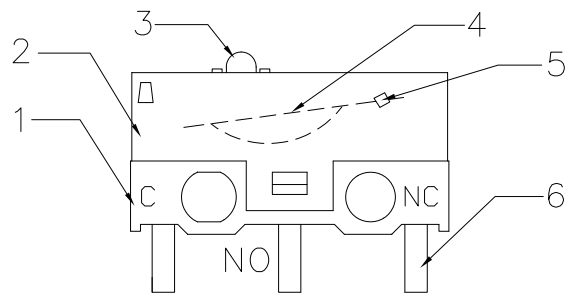
RoHS  
Compliant  
2002/95/EC

REV.	ECN.	NO.	APPD.

### Terminal Type



### Structure chart



### Material list

NO.	PARTS	MATERIAL	Q'TY	FINISHING
8				
7				
6	Terminal	C2680	3	
5	Contact	Silver alloy	1	
4	Spring Plate	C1720	1	
3	Button	PBT	1	WHITE
2	Case	PBT	1	BLACK
1	Base	PBT	1	WHITE

Tolerance: ±0.2

UNITS mm

MAT'L

SEE NOTE

FINISH

SEE NOTE

Q'TY

THESE DRAWINGS AND SPECIFICATIONS ARE THE PROPERTY OF ACCURATE INNO TECH INC AND SHALL NOT BE REPRODUCED, COPIED OR USED IN ANY MANNER WITHOUT THE PRIOR WRITTEN CONSENT OF ACCURATE INNO TECH INC.

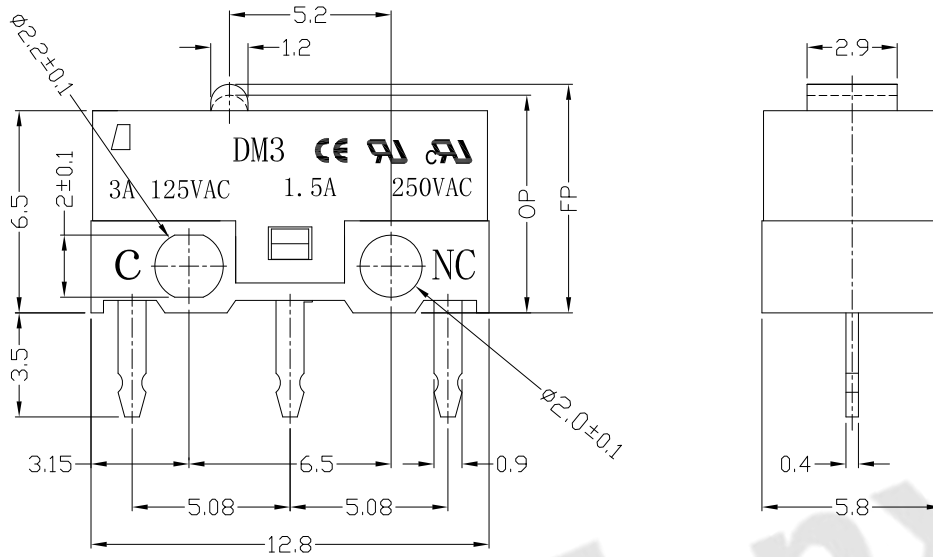
<b>东莞市腾兴电子有限公司</b>			
TITLE: MICRO SWITCH DM SERIES		PART NO.: DM1-00X-XX-3	
DR: Ricky 2017/2/15		DWG NO.: ATD-00X-XX-3	
CHKD: Ricky 2017/2/15		SCALE	SHEET
APPD:		1:1	2/2
		REV. A	CUSTOMER DRAWING



RoHS  
Compliant  
2002/95/EC

REV.	ECN.	NO.	APPD.

## DIMENSIONS



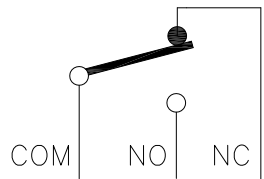
## 1.Functional spec

1.1 Rated Voltage	125VAC/250VAC
1.2 Rated Current	3A/1.5A
1.3 Contact Resistance	≤100mΩ(Initial value)
1.4 Operating Force	60±20gf   130±30gf
1.5 Bounce Time	
1.6 Free Position	7.35±0.2mm
1.7 Operating Position	7.0±0.2mm
1.8 Position Travel	
1.9 Return Force	

## MODEL CODE

DM 3 - 00 X - XX - 6 - 0  
1 2 3 4 5 6 7

- Series : DM
- Current Rating : 3=3A 125VAC ; 1.5A 250VAC
- Actuator : 00=non-lever 01-99=Lever
- Termination : see chart (P/C/D/T/N)
- Operating Force : see chart
- Button colour : 6=grey
- Cover type : 0=No two lines



CIRCUIT DIAGRAM

## 2.Reliable Rating

2.1 Mechanical Life	1,000,000 CYCLES
2.2 Electrical Life	10,000 CYCLES
2.3 Insulation Resistance	≥100MΩ DC500V
2.4 Withstand Voltage	AC500V 1 minute
2.5 Soldering Technic	Hand Soldering
2.6 Operating Temper	-25°C ~ +65°C
2.7 Ambient Humidity Used	<85%RH

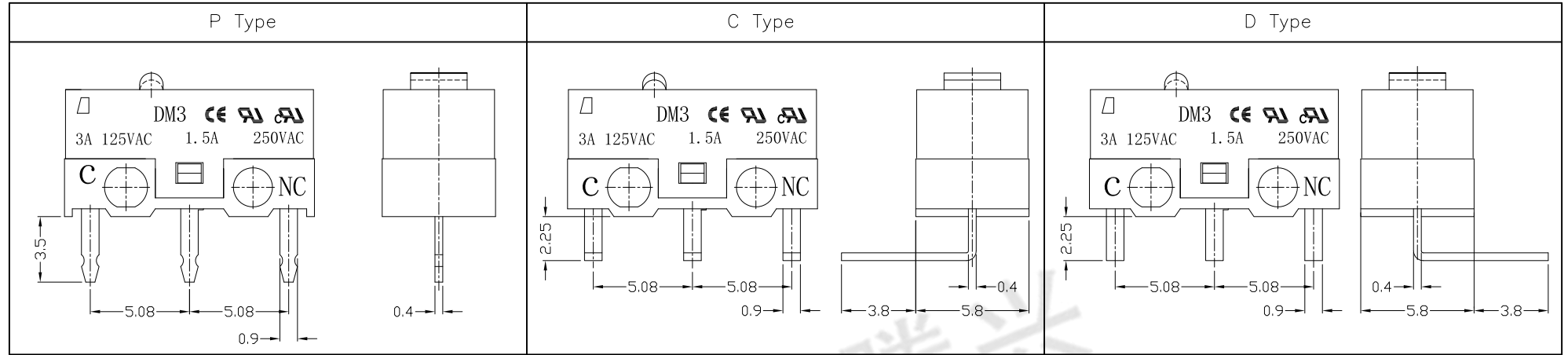
Tolerance:±0.2		UNITS	东莞市腾兴电子有限公司			
		mm				
		MAT'L	SEE NOTE		TITLE: MICRO SWITCH DM SERIES	
		FINISH	SEE NOTE		PART NO: DM3-00P-XX-6-0	
		Q'TY	DR: Ricky 2017/2/20		DWG NO: ATD-00X-XX-6-0	
<small>THESE DRAWINGS AND SPECIFICATIONS ARE THE PROPERTY OF ACCURATE INNOTECH INC AND SHALL NOT BE REPRODUCED, COPIED OR USED IN ANY MANNER WITHOUT THE PRIOR WRITTEN CONSENT OF ACCURATE INNOTECH INC.</small>			CHKD: Ricky 2017/2/20		SCALE	
			APPD:		1:1	SHEET 1/2



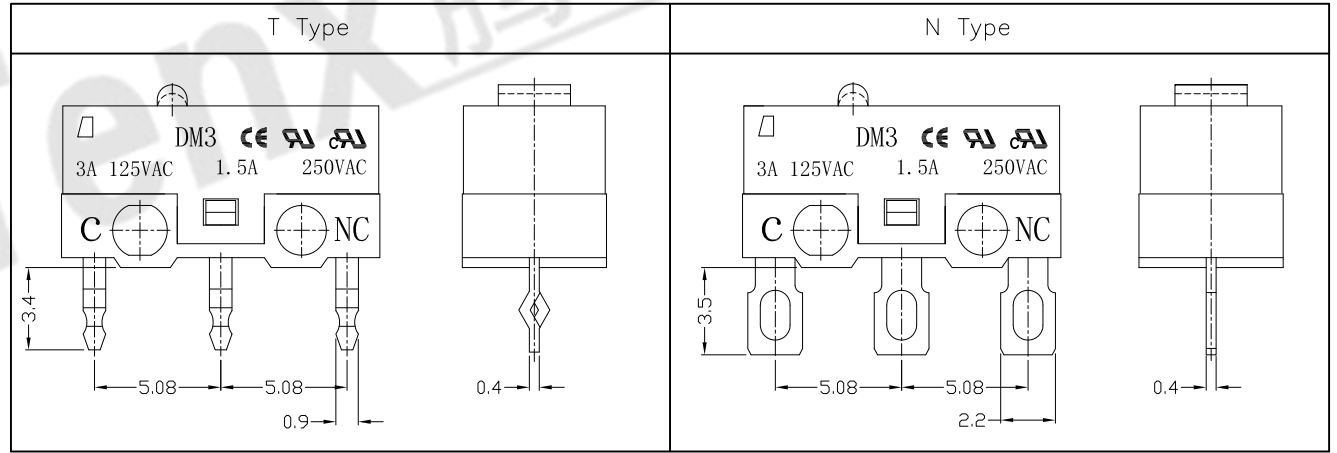
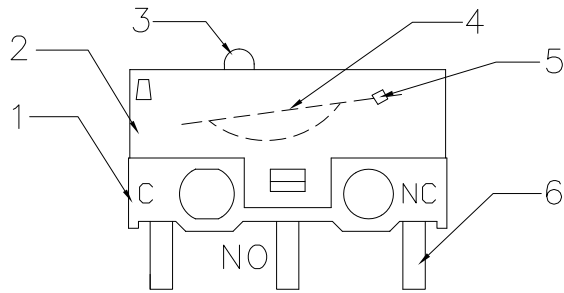
RoHS  
Compliant  
2002/95/EC

REV.	ECN.	NO.	APPD.

### Terminal Type



### Structure chart



### Material list

NO.	PARTS	MATERIAL	Q'TY	FINISHING	UNITS	mm	东莞市腾兴电子有限公司			
8					Tolerance: ±0.2		TITLE: MICRO SWITCH DM SERIES PART NO.: DM3-00X-XX-6-0			
7					MAT'L					
6	Terminal	C2680	3		SEE NOTE		CHKD: Ricky 2017/2/20			
5	Contact	Silver alloy	3		FINISH		SCALE: 1:1 SHEET: 2/2 REV.: A CUSTOMER DRAWING			
4	Spring Plate	C1720	1		SEE NOTE		APPD:			
3	Button	Nylon	1	GREY	Q'TY					
2	Case	PBT	1	BLACK	SEE NOTE					
1	Base	PBT	1	WHITE	Q'TY					
NO.	PARTS	MATERIAL	Q'TY	FINISHING	Q'TY					

THESE DRAWINGS AND SPECIFICATIONS ARE THE PROPERTY OF ACCURATE INNOVATECH INC AND SHALL NOT BE REPRODUCED, COPIED OR USED IN ANY MANNER WITHOUT THE PRIOR WRITTEN CONSENT OF ACCURATE INNOVATECH INC.