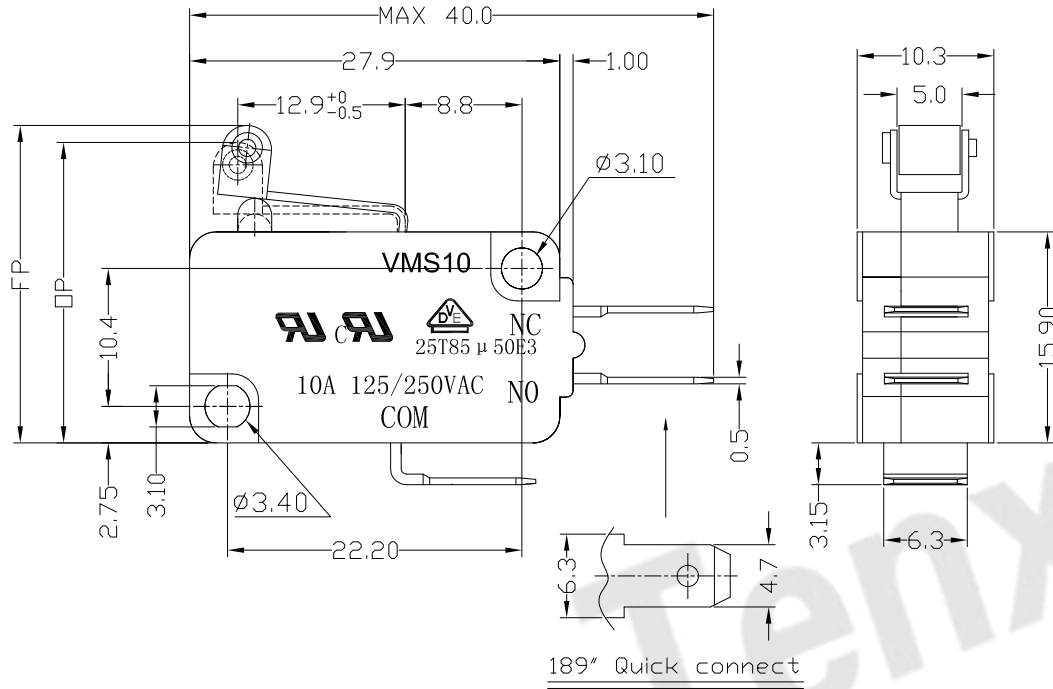




RoHS
Compliant
2002/95/EC

REV.	ECN.	NO.	APPD.

DIMENSIONS

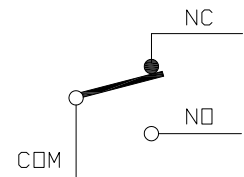


MODEL CODE

VMS 10-05 X-XX-V10

1 2 3 4 5 6

- Series : VMS
- Current Rating : 10=10A 125/250VAC
- Actuator : 00=Non-lever 01-99=Lever
- Termination : see chart (N/K/J/L/W/A)
(7=SPST-NO / 16=SPST-NC)
- Operating Force : see chart
- Contact type: V10=10Amps Contact



CIRCUIT DIAGRAM

1.Functional spec

1.1 Rated Voltage(AC)	125/250VAC	
1.2 Rated Current(AC)	10A	
1.3 Contact Resistance	≤100mΩ(Initial value)	
1.4 Operating Force	160±40gf	250±50gf
1.5 Bounce Time		
1.6 Free Position	24.5±1.0mm	
1.7 Operating Position	23.5±1.0mm	
1.8 Position Travel		
1.9 Return Force		

2.Reliable Rating

2.1 Mechanical Life	1,000,000 CYCLES
2.2 Electrical Life	10,000 CYCLES
2.3 Insulation Resistance	≥100MΩ DC500V
2.4 Withstand Voltage	AC1500V 1 minute
2.5 Soldering Technic	Hand Soldering
2.6 Operating Temper	-25°C ~ +85°C
2.7 Ambient Humidity Used	<85%RH

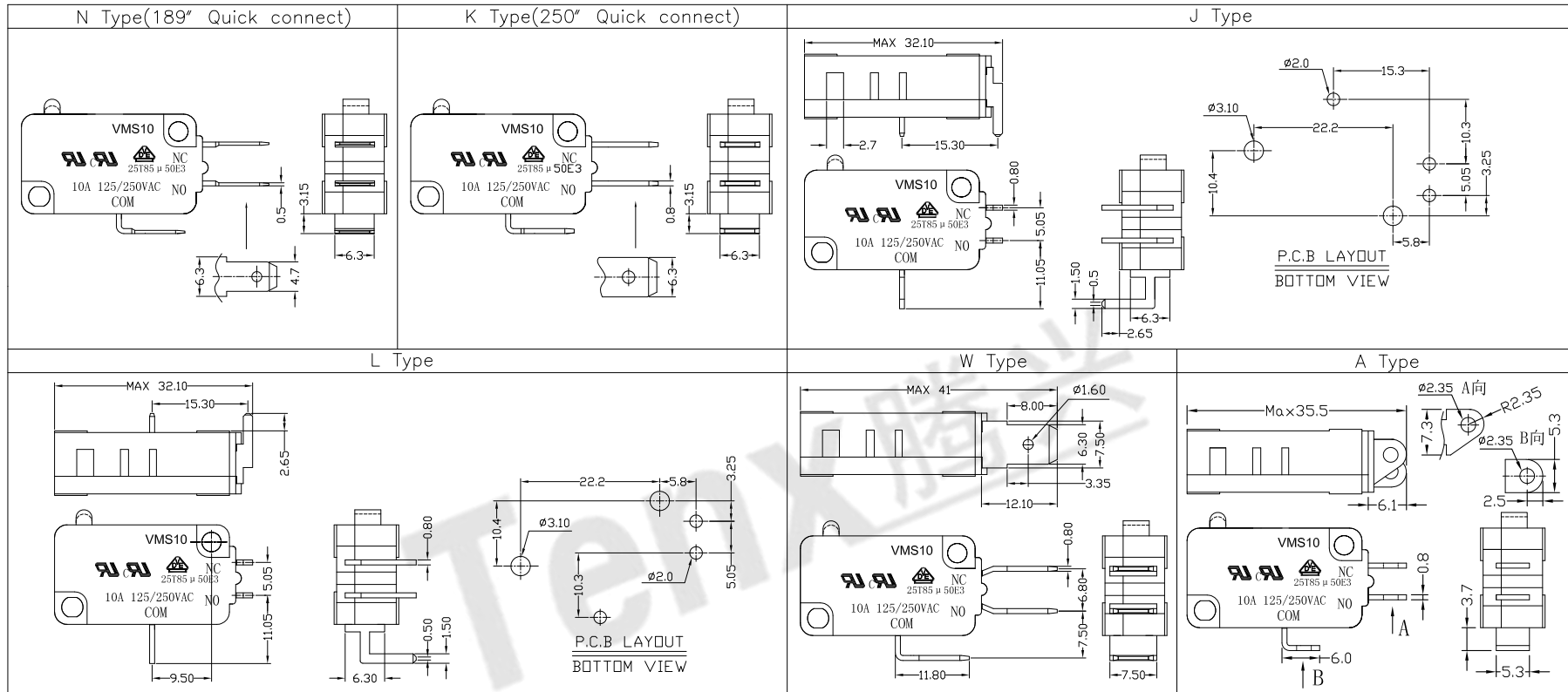
Tolerance:±0.2	UNITS mm	东莞市腾兴电子有限公司				
	MAT'L					
	SEE NOTE	TITLE:	PART NO.:			
	FINISH	MICRO SWITCH VMS10 SERIES	VMS10-05N-XX-V10			
	SEE NOTE	DR: Ricky 2017/6/7	DWG NO.:			
	Q'TY	CHKD: Ricky 2017/6/7	ATD-05X-XX-V10			
THESE DRAWINGS AND SPECIFICATIONS ARE THE PROPERTY OF ACCURATE INNOTECH INC AND SHALL NOT BE REPRODUCED, COPIED OR USED IN ANY MANNER WITHOUT THE PRIOR WRITTEN CONSENT OF ACCURATE INNOTECH INC.		APPD:	SCALE	SHEET	REV.	CUSTOMER DRAWING
			1:1	1/2	A	



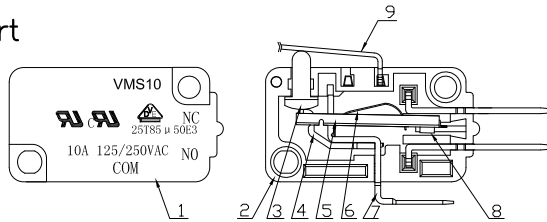
RoHS
Compliant
2002/95/EC

REV.	ECN.	NO.	APPD.

Terminal Type



Structure chart



Material list

NO.	PARTS	MATERIAL	Q'TY	FINISHING	Tolerance: ±0.2	UNITS mm	东莞市腾兴电子有限公司					
9	Lever	SUS301	1				TITLE: MICRO SWITCH VM10 SERIES	PART NO.: VMS10-05X-XX-V10				
8	Contact	Silver alloy	3			MAT'L		DR: <i>Ricky</i> 2017/6/7	DWG NO.: ATD-05X-XX-V10			
7	Terminal	C2680	3	Silver Plating		SEE NOTE	FINISH	CHKD: <i>Ricky</i> 2017/6/7	SCALE	SHEET	REV.	CUSTOMER
6	Spring Plate	C5210	1			SEE NOTE	Q'TY	APPD:	11	2/2	A	DRAWING
5	Change Plate	C2680	1									
4	Fixed Rod	C2680	1									
3	Button	PBT	1	Gray								
2	Lower Housing	PBT	1	Black								
1	Upper Housing	PBT	1	Black								

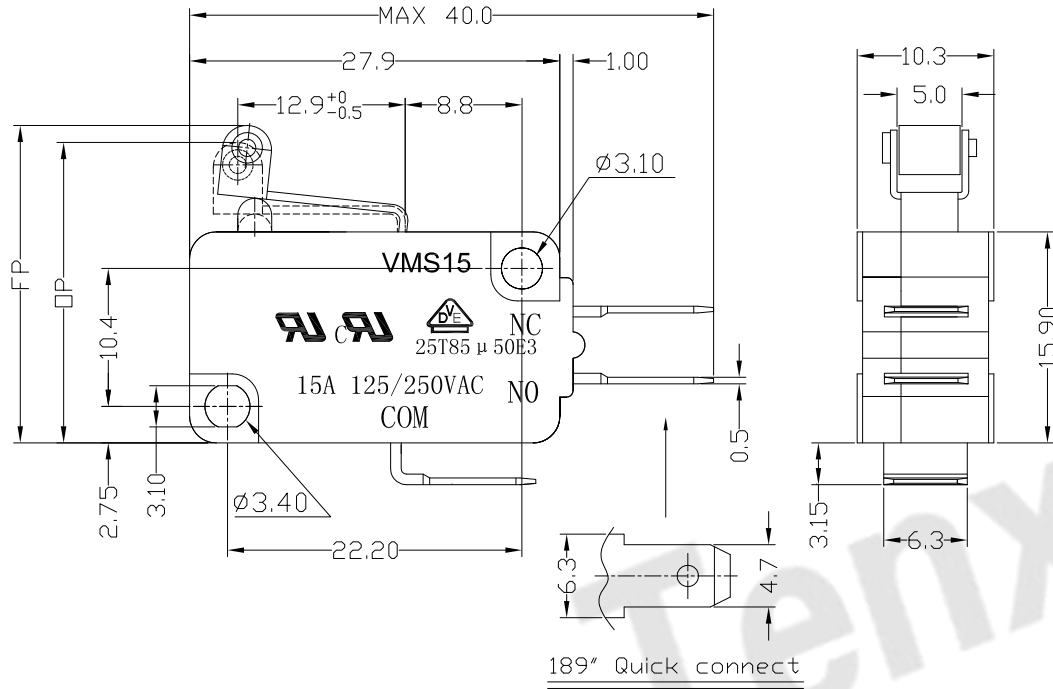
THESE DRAWINGS AND SPECIFICATIONS ARE THE PROPERTY OF ACCURATE INNOTECH INC AND SHALL NOT BE REPRODUCED, COPIED OR USED IN ANY MANNER WITHOUT THE PRIOR WRITTEN CONSENT OF ACCURATE INNOTECH INC.



RoHS
Compliant
2002/95/EC

REV.	ECN.	NO.	APPD.

DIMENSIONS



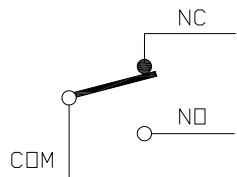
MODEL CODE

VMS 15-05 X-XX-V15

1 2 3 4 5 6

- 1.Series : VMS
- 2.Current Rating : 15=15A 125/250VAC
- 3.Actuator : 00=Non-lever 01-99=Lever
- 4.Termination : see chart (N/K/J/L/W/A)
(7=SPST-NO / 16=SPST-NC)
- 5.Operating Force : see chart
- 6.Contact type: V15=15Amps Contact

CIRCUIT DIAGRAM



1.Functional spec

1.1 Rated Voltage(AC)	125/250VAC	
1.2 Rated Current(AC)	15A	
1.3 Contact Resistance	≤100mΩ(Initial value)	
1.4 Operating Force	160±40gf	250±50gf
1.5 Bounce Time		
1.6 Free Position	24.5±1.0mm	
1.7 Operating Position	23.5±1.0mm	
1.8 Position Travel		
1.9 Return Force		

2.Reliable Rating

2.1 Mechanical Life	1,000,000 CYCLES
2.2 Electrical Life	10,000 CYCLES
2.3 Insulation Resistance	≥100MΩ DC500V
2.4 Withstand Voltage	AC1500V 1 minute
2.5 Soldering Technic	Hand Soldering
2.6 Operating Temper	-25°C ~ +85°C
2.7 Ambient Humidity Used	<85%RH

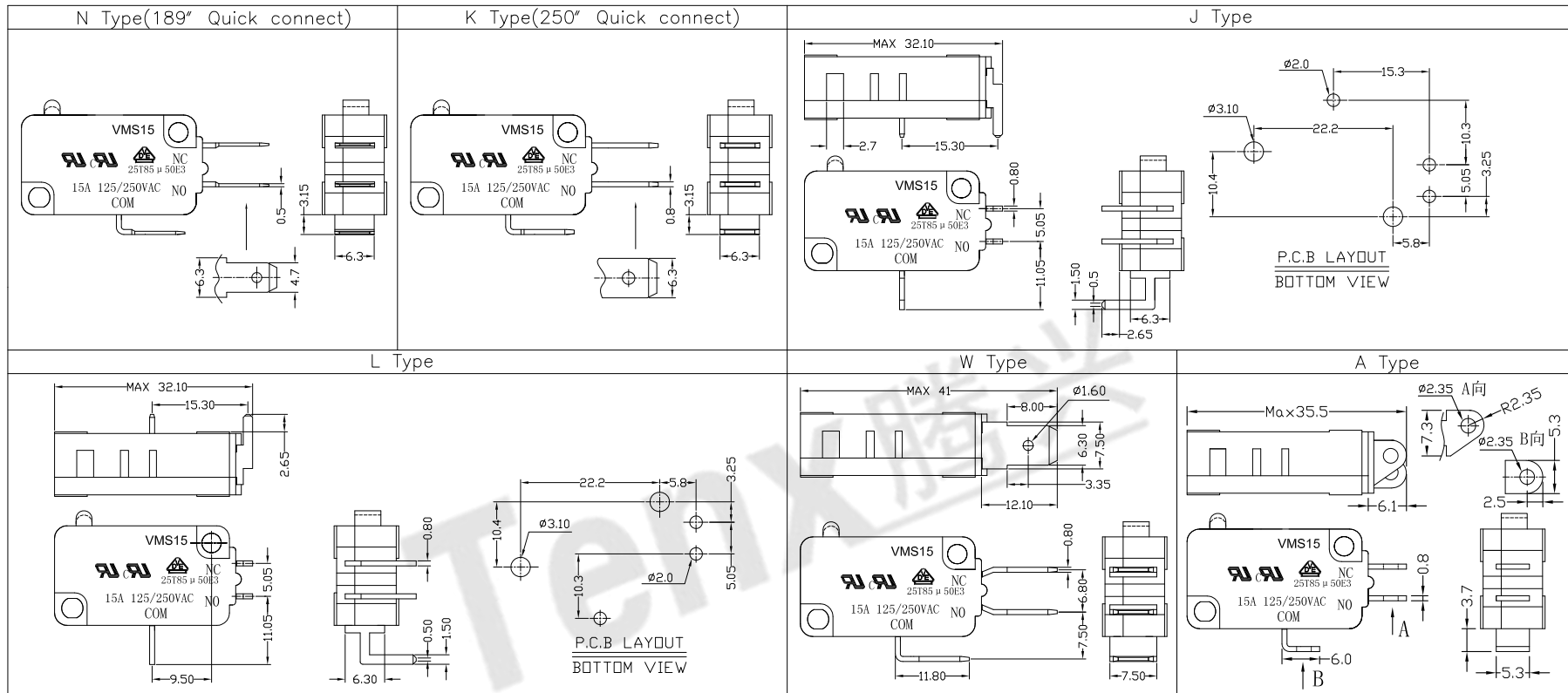
Tolerance:±0.2	UNITS mm	东莞市腾兴电子有限公司				
	MAT'L					
	SEE NOTE	TITLE:	PART NO.:			
	FINISH	MICRO SWITCH VMS15 SERIES	VMS15-05N-XX-V15			
	SEE NOTE	DR: Ricky 2017/6/8	DWG NO.:			
	Q'TY	CHKD: Ricky 2017/6/8	ATD-05X-XX-V15			
THESE DRAWINGS AND SPECIFICATIONS ARE THE PROPERTY OF ACCURATE INNOTECH INC AND SHALL NOT BE REPRODUCED, COPIED OR USED IN ANY MANNER WITHOUT THE PRIOR WRITTEN CONSENT OF ACCURATE INNOTECH INC.		APPD:	SCALE	SHEET	REV.	CUSTOMER DRAWING
			1:1	1/2	A	



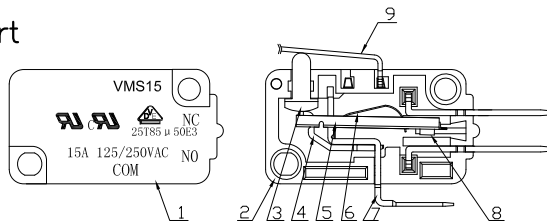
RoHS
Compliant
2002/95/EC

REV.	ECN.	NO.	APPD.

Terminal Type



Structure chart



Material list

NO.	PARTS	MATERIAL	Q'TY	FINISHING	Tolerance: ±0.2	UNITS mm	东莞市腾兴电子有限公司			
9	Lever	SUS301	1				TITLE:	PART NO.:		
8	Contact	Silver alloy	3				MAT'L	VMS15-05X-XX-V15		
7	Terminal	C2680	3	Silver Plating			SEE NOTE	MICRO SWITCH VM15 SERIES		
6	Spring Plate	C5210	1				FINISH	DR: Ricky 2017/6/8		DWG NO.:
5	Change Plate	C2680	1				SEE NOTE	CHKD: Ricky 2017/6/8		ATD-05X-XX-V15
4	Fixed Rod	C2680	1				Q'TY	APPD:		SCALE SHEET REV. CUSTOMER
3	Button	PBT	1	Gray						11 2/2 A DRAWING
2	Lower Housing	PBT	1	Black						
1	Upper Housing	PBT	1	Black						
					<small>THESE DRAWINGS AND SPECIFICATIONS ARE THE PROPERTY OF ACCURATE INNOTECH INC AND SHALL NOT BE REPRODUCED, COPIED OR USED IN ANY MANNER WITHOUT THE PRIOR WRITTEN CONSENT OF ACCURATE INNOTECH INC.</small>					