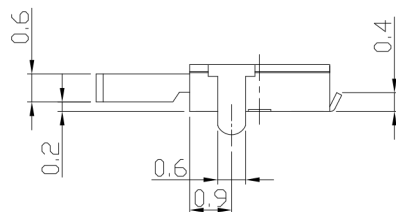
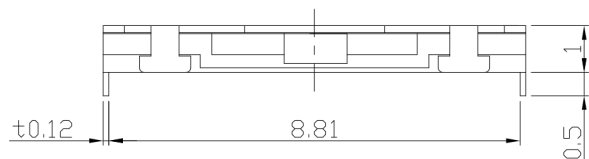




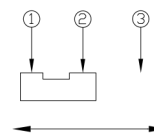
RoHS Compliant
2002/95/EC

REV.	ECN. NO.	APPD.

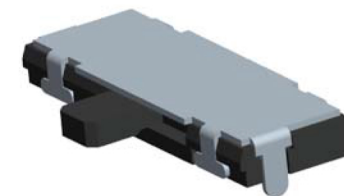
DIMENSIONS



CIRCUIT DIAGRAM

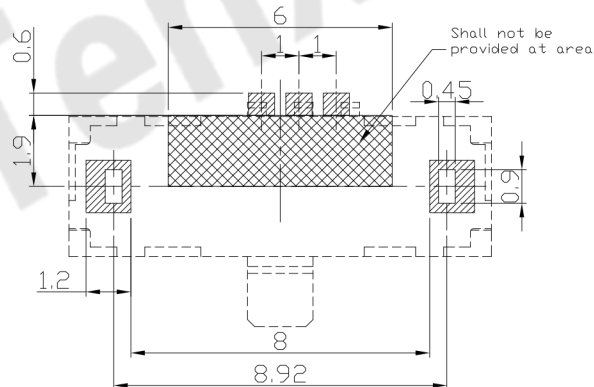
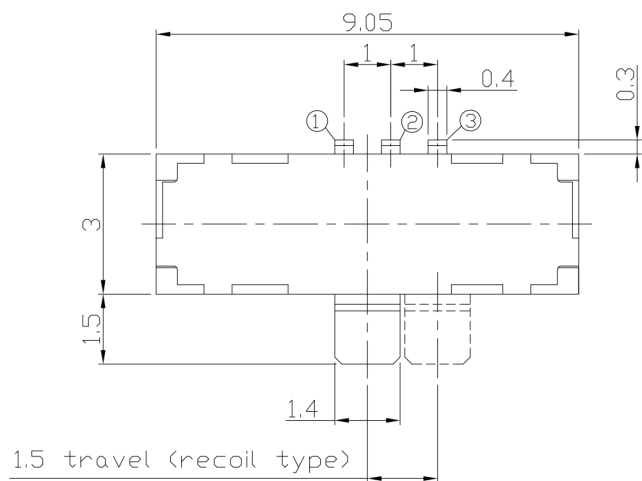


PRODUCT IMAGE



P.C.B MOUNTING PATTERN DIMENSION

The following soldering patterns are recommended for reflow soldering



ELECTRO-MECHANICAL CHARACTERISTICS

Refer to additional specifications

Rating	DC 5V 0.1A
Circuit	1C-2P
Contact Resistance	200mΩ Max.
Travel	1.5±0.3mm
Operating Force	100±50gf
Operating Life(cycles)	100,000

.X ±0.2	X. ±2'	UNITS mm
		MAT'L SEE NOTE
		FINISH SEE NOTE
		Q'TY

THESE DRAWINGS AND SPECIFICATIONS ARE THE PROPERTY OF ACCURATE INNTECH INC AND SHALL NOT BE REPRODUCED, COPIED OR USED IN ANY MANNER WITHOUT THE PRIOR WRITTEN CONSENT OF ACCURATE INNTECH INC.

东莞市腾兴电子有限公司			
TITLE: MINI SLIDE SWITCH		PART NO.: AS-1271 SERIES	
DR: <i>Ricky</i> 2014/04/03		DWG NO.: ASI-1271	
CHKD: <i>Ricky</i> 2014/04/03		SCALE	SHEET
APPD:		1:1	1/1
		REV. A	CUSTOMER DRAWING