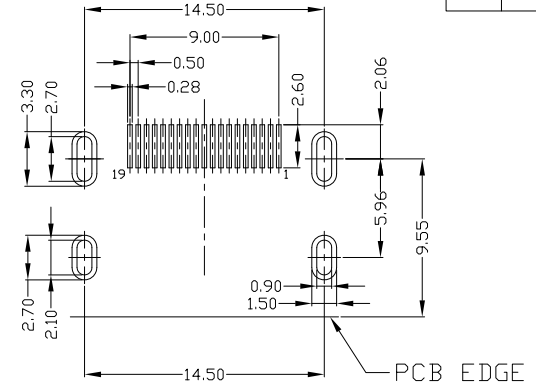
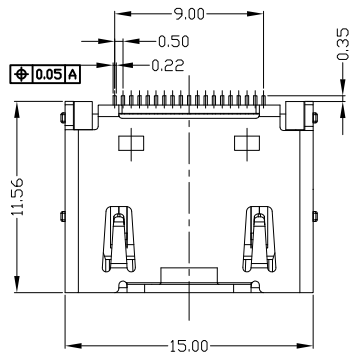


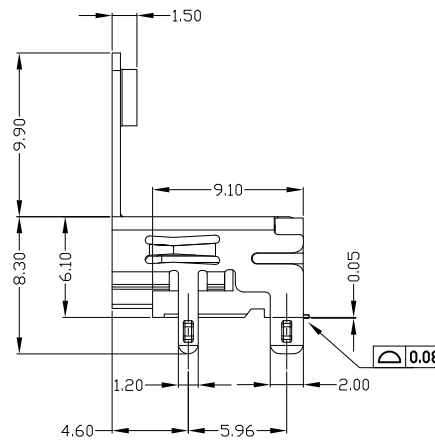
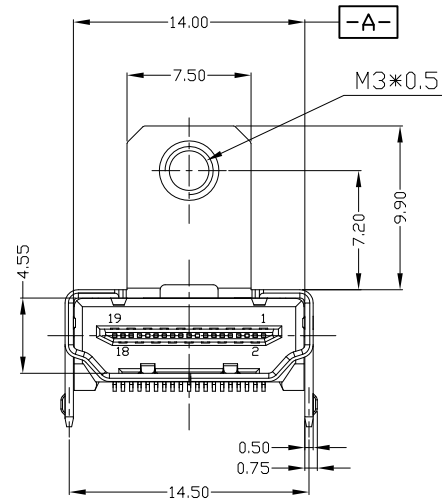


RoHS  
Compliant  
2002/95/EC

REV.	ECN.	NO.	APPD.



RECOMMENDED PCB LAYOUT (T=1.60mm)



NOTES:

- ELECTRICAL:
  - VOLTAGE CURRENT RATING: 0.5AMP, 30V AC;
  - INSULATION RESISTANCE: 100MΩ MIN;
  - CONTACT RESISTANCE: 30mΩ MAX;
  - WITHSTANDING VOLTAGE: 500V AC;
  - OPERATING TEMPERATURE: -20°C TO +85°C.
- Mechanical:
  - Mating Force: 35N MAX
  - Unmating Force: 10N MIN.
- DIMENSIONS MARKED "▼" TO BE CHECKED BY Q.C & IPQC.
- PART NO.

HMAF-191N-4BHS46

- N: Ni
- G: Au
- 1: Au 1U"
- 5: Au 15U"

Bill of materials:

NO	PARTS	MATERIAL	QTY	FINISHING	UNITS	mm	东莞市腾兴电子有限公司					
3	HOUSING	LCP+30%GF	1	UL94V-0	X. ±0.35	X.' ±2'	SEE NOTE	TITLE: HDMI AF 19PIN SMT 带耳铜壳 DIP脚带凸点 L=9.10		PART NO.: HMAF-191N-4BHS46		
2	SHELL	COPPER ALLOY	1	PLATED NICKEL	.X ±0.3	.X' ±1'		DR: gan 2017/07/2	DWG NO.: AII-HS46		SCALE SHEET REV. CUSTOMER DRAWING	
1	TERMINAL	COPPER ALLOY	19	PLATED GOLD/TIN	.XXX ±0.25	.XX'		FINISH SEE NOTE	CHKD: gan 2017/07/2	1:1	1/1	B
					.XXX ±0.15	.XXX'	Q'TY	APPD: gan 2017/07/2				

THESE DRAWINGS AND SPECIFICATIONS ARE THE PROPERTY OF ACCURATE INNOTECH INC AND SHALL NOT BE REPRODUCED, COPIED OR USED IN ANY MANNER WITHOUT THE PRIOR WRITTEN CONSENT OF ACCURATE INNOTECH INC.