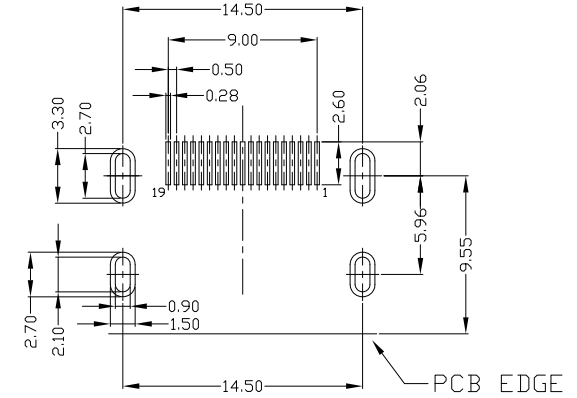
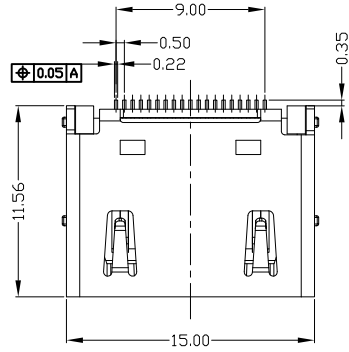


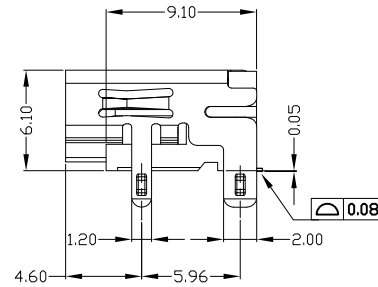
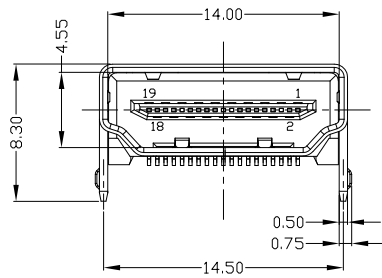


RoHS  
Compliant  
2002/95/EC

REV.	ECN. NO.	APPD.



RECOMMENDED PCB LAYOUT (T=1.60mm)



NOTES:

- ELECTRICAL:
  - VOLTAGE CURRENT RATING: 0.5AMP,30V AC;
  - INSULATION RESISTANCE: 100MΩ MIN;
  - CONTACT RESISTANCE: 30mΩ MAX;
  - WITHSTANDING VOLTAGE: 500V AC;
  - OPERATING TEMPERATURE:-55°C TO +105°C.
- Mechanical:
  - Mating Force: 35N MAX
  - Unmating Force: 10N MIN.
- DIMENSIONS MARKED "▼" TO BE CHECKED BY Q.C & IPQC.
- PART NO.

HMAF-191N-4BHS41

- N: Ni
- G: Au
- 1: Au 1U"
- 5: Au 15U"

Bill of materials:

NO	PARTS	MATERIAL	QTY	FINISHING	UNITS	MAT'L	DR:	SCALE	SHEET	REV.	CUSTOMER DRAWING
3	HOUSING	LCP+30%GF	1	UL94V-0	X. ±0.35	X.' ±2'	gan 2017/07/2	1:1	1/1	B	东莞市腾兴电子有限公司 PART NO.: HMAF-191N-4BHS41 DWG NO.: AII-HS41
2	SHELL	COPPER ALLOY	1	PLATED NICKEL	.X ±0.3	.X' ±1'	gan 2017/07/2	1:1	1/1	B	
1	TERMINAL	COPPER ALLOY	19	PLATED GOLD/TIN	.XX ±0.25	.XX'	gan 2017/07/2	1:1	1/1	B	
					.XXX ±0.15	.XXX'	gan 2017/07/2	1:1	1/1	B	
THESE DRAWINGS AND SPECIFICATIONS ARE THE PROPERTY OF ACCURATE INNOTECH INC AND SHALL NOT BE REPRODUCED, COPIED OR USED IN ANY MANNER WITHOUT THE PRIOR WRITTEN CONSENT OF ACCURATE INNOTECH INC.					Q'TY	SEE NOTE	APPD:				